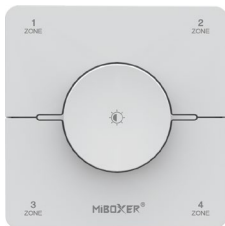


4 Zone CCT rotating panel remote

Model No.: K05

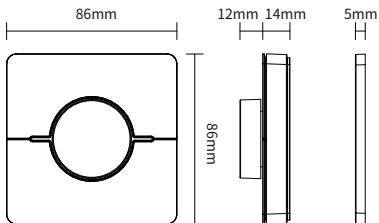
Product Feature

- Brightness and color temperature adjustable
- 2.4GHz wireless transmission technology
- Support MiBoxer/Mi-Light 2.4G series
- Control distance: 30m
- Supports matching multiple devices and can control multiple devices at the same time
- Easy installation, magnetic mounting

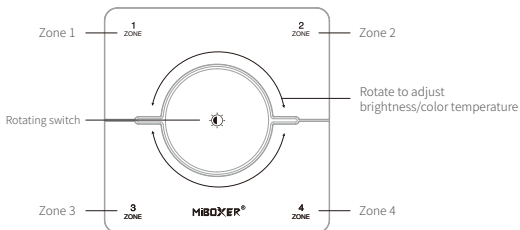


Product Parameter

Product name:	4 Zone CCT rotating panel remote	Working Temperature:	-10~40 C
Model:	K05	EMC Standards (EMC):	ETSI EN301 489-1 v 2.2.3 (2019-11) ETSI EN 301 489-3 v 2.3.2 (2023-01)
Operating Voltage:	3V(AAA*2PCS)	Safety Standard (LVD):	EN 61347-2-11:2001+A1:2019, EN 61347-1:2015+A1:2021, EN 62493:2015 +A1:2022
Standby power:	6μA	Radio equipment (RED):	ETSI EN 300 440 V2.2.1
Transmit power:	6dBm	Certification	CE, EMC, LVD, RED
RF:	2.4GHz RF		
Modulation Method:	GFSK		
Control Distance:	30M		



Indication



Rotating: Dimming

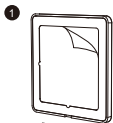
Short press rotary button: switch to color temperature mode, rotate to adjust the color temperature

(attention: device will step out CCT mode if user don't operate it within 3 seconds)

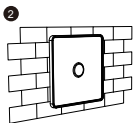
1 ... 4
ZONE ... ZONE

Short Press: turn on light in group
Short press again: turn off light in group

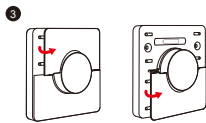
Installation



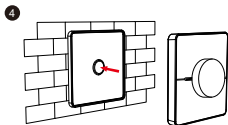
Rip the double-sided tape on the back of the base



Attach the base securely



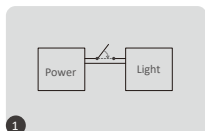
Install the battery :2*AAA



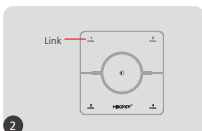
The remote is magnetized on the base

Link/Unlink

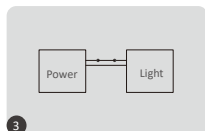
Link controller must link with remote before using it



turn off light 10 seconds and turn on again



Short press the "Zone" 6 times within 3 seconds

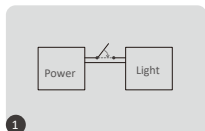


link is done once light flashes 3 times slowly

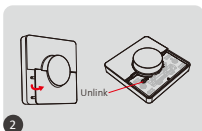


Link is failed if light doesn't flash, please repeat above steps
(Attention: can not link again if remote already finished linking)

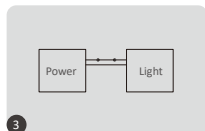
Unlink:



turn off light 10 seconds and turn on again



Open the lower cover and short press the zone to be cleared, and press the "SET" key 5 times within 3 seconds



link is done once light flashes 10 times quickly



Unlink is failed if light doesn't flash, please repeat above steps
(Attention: no need to unlink if the light never be linked)

Attention

- 1.This remote control supports MiBoxer/Mi-Light 2.4G series products; see the product manual for details about whether this remote control is compatible.
2. Don't use it in humidity or high temperature area, please take out battery if don't use it frequently and keep it in dry or static electricity area
3. Don't use it near metal or strong magnetic area, it will affect signal and lost distance.



Made in China